



IntelliHue Pro

The smart way to deliver exceptional white and color light

a gnify brand

Precise, accurate color and bright white light from the same luminaire

For more than a decade our groundbreaking IntelliHue technology has been making it easy for lighting professionals to get high output and exceptional quality in both white and color LED light—all in a single advanced but affordable IntelliHue luminaire.

Today, you'll find IntelliHue technology integrated in a wide range of luminaires for grazing, washing, spotlighting, and more.

IntelliHue luminaires deliver consistent, high-quality whites and saturated colors. Thanks to their carefully selected LED mix of red, green, blue, and mint white—and smart innovations that boost output and quality—IntelliHue luminaires exceed the capabilities of RGBW and RGBA luminaires.

IntelliHue Pro luminaires feature an expanded LED mix—red, green, blue, amber, and 4000K white—that enables a broader light gamut, including saturated royal blue, red, and green. IntelliHue Pro also brings new accuracy to difficult-to-output colors, such as amber, purple, and magenta. With IntelliHue Pro, these luminaires can achieve even higher quality (>90 CRI) and significantly better efficacy. But they do not require additional control addresses, just a simple 3-control selection.

At Color Kinetics, we're committed to continually enhancing our luminaires with the latest capabilities and innovations—enabled by our extensive portfolio of advanced technologies. IntelliHue Pro technology is available for specific Color Kinetics luminaire families, while other luminaires integrate our core IntelliHue technology.

Explore our current portfolio of IntelliHue and IntelliHue Pro luminaires.



Photography: Matagarup Bridge, Perth, Western Australia

IntelliHue technology delivers

High Output

IntelliHue luminaires achieve high output (flux), bringing new impact to a wide range of lighting designs, interior and exterior. IntelliHue Pro offers significantly higher output. For example, Graze Elite IntelliHue Powercore is a high-output luminaire that delivers twice as much light (e.g., 1172 lumens @ 4000k) as comparable luminaires. And thanks to its smart design, it uses less power.

Exceptional Quality

IntelliHue achieves higher CRI compared to RGBA or RGBW luminaires, ensuring high-quality white and color light.

IntelliHue Pro provides even higher quality, exceeding 90 CRI across a wide gamut.

Flexibility

IntelliHue delivers high-quality tunable white light and color-changing effects in the same luminaire, bringing new flexibility to locations that require flexible illumination options. IntelliHue Pro provides significantly higher-quality white light, thanks to its broader gamut, including exceptional R9 values.

Simplicity and Savings

IntelliHue Pro luminaires simplify color selection and commissioning with a 3-to-n approach to controls. Simply choose three DMX values, even when combining luminaires using three, four, five, or more channels (3 to n). Fewer controls mean greater simplicity and savings.

IntelliHue and Chromasync Pro

IntelliHue is just one of the innovative Color Kinetics technologies integrated in our IntelliHue luminaires.

You also benefit from Chromasync and Chromasync Pro which work hand-in-hand with IntelliHue to maximize output, quality, and color consistency. For example, Chromasync provides a high level of color consistency that renders color variations virtually imperceptible.

Chromasync Pro makes color consistency even easier by ensuring the best possible color matching no matter how many channels your luminaires use—3, 4, 5, or more.

IntelliHue technology delivers high flux and exceptional quality

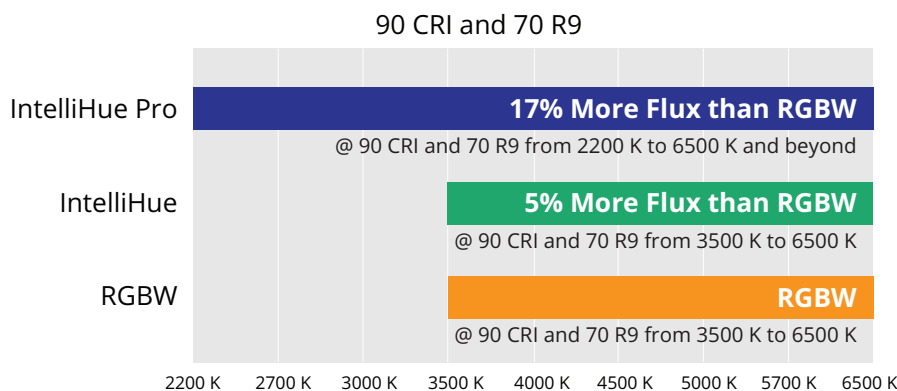
IntelliHue delivers both of the key qualities that define exceptional illumination—brightness and accuracy.

IntelliHue technology enables a single luminaire to deliver brilliant whites and saturated colors—and to provide higher output and quality than traditional RGBW or RGBA luminaires. IntelliHue Pro luminaires takes both to even higher levels with greater flux, and 90+ CRI across a wider gamut. The result? Lighting designers can be confident that all IntelliHue luminaires will achieve high illuminance, delivering maximum light where they want it, as well as precise accuracy and unbeatable quality.

Making an impact with high flux

It's simple. More light means more impact. Brightness is critical to any lighting installation, from grazing a storefront to illuminating the details of a national monument. That's why IntelliHue luminaires delivers

more light where you need it most. IntelliHue technology is designed to achieve maximum flux, while IntelliHue Pro raises flux even higher over its broader spectrum.

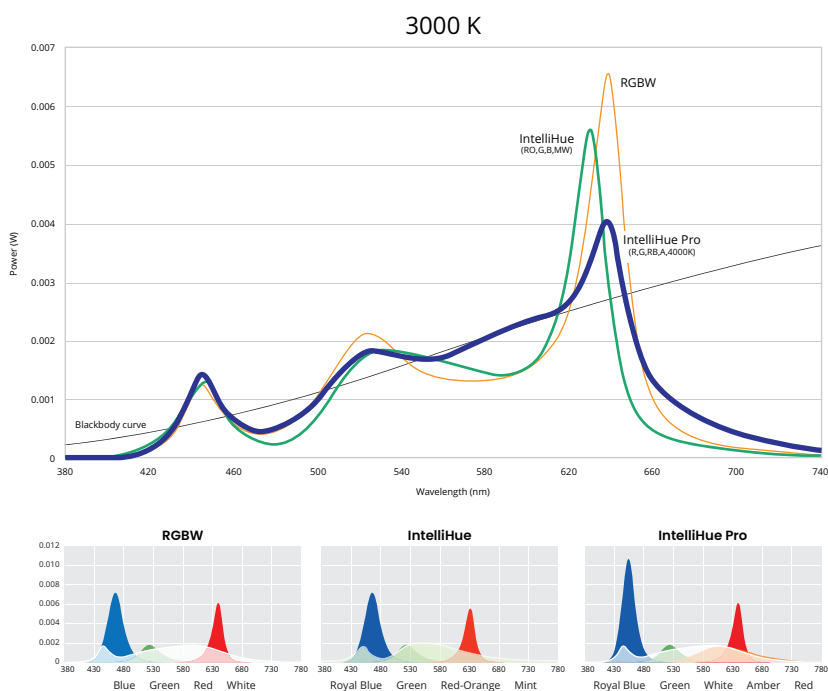


IntelliHue Pro and IntelliHue deliver more flux than RGBW. IntelliHue Pro excels across a wider range of color temperatures—particularly in critical color temperatures, including amber. And IntelliHue provides more flux in cooler color temps.

Achieving your vision with accurate color

With IntelliHue, you get a high level of control and flexibility when selecting and adjusting color, especially shades of white light. IntelliHue luminaires provide the exact hue that you want and hit any tint of white. Now you can choose the right white for your needs, without compromises. With IntelliHue, your vision holds true from design to commissioning.

IntelliHue Pro's 5-channel LED mix—red, green, blue, amber, and 4000K white—enable an expanded gamut that delivers highly saturated colors and high accuracy of 90+ CRI. For example, it makes it even easier to output saturated royal blue, ambers, and reds. And higher R9 values expand the range of high-quality whites even further.



IntelliHue Pro and IntelliHue achieve higher quality than RGBW. By tracking closer to the black-body curve, they provide more accurate light. The result? Consistency and accuracy (high CRI) across a broad gamut.

Keeping it simple

For greater simplicity and convenience, all IntelliHue Pro luminaires enable you to simply choose three colors (RGB, HSB, or a white point on the black-body curve). You get the most efficient path to the most output and the best quality light. And you get the flexibility to target exactly what you want, including high flux, high CRI, and more.



IntelliHue Pro luminaires bring a simpler, easier 3-to-n approach to controls. Just choose three DMX values, even when combining luminaires using more channels. IntelliHue Pro does the rest, choosing the exact mix necessary to output the color you've selected—with accuracy and high output.

IntelliHue expands the creative possibilities.

All IntelliHue and IntelliHue Pro luminaires deliver high-quality, bright illumination—white, color, and dynamic color. They illuminate spaces with highly uniform, high-quality, digitally adjustable white light to support a range of retail, hospitality, and other applications. IntelliHue helps you transform spaces with intensely saturated, dynamic accent, and full-color effect lighting for dramatic presentations, theatrical atmospheres, and special occasions and events.

Brilliant whites and saturated colors—all output with exceptional accuracy and high flux—make the possible applications for IntelliHue luminaires nearly limitless.

Photo Credits: (clockwise, l to r)

VOSS Lighting for BASF Office, Durham, North Carolina, USA

Nick Dankers, Livingprojects for Watertoren Bollenstreek, Hillegom, The Netherlands

Gutake Film for Guanyin Altar, China

digitalimage.at for Vienna City Hall, Vienna, Austria

Pro-Cal Lighting for Hilton San Diego Bayfront Hotel, San Diego, California, USA

Micheal Sestak for Luminous Passage, Sacramento, California, USA

Noble Arts for Ben Franklin Bridge, Philadelphia, Pennsylvania, USA

Arkilux for The Diner, Milan, Italy

Give building occupants the option to adjust the color temperature, tint, and intensity of white light to increase comfort and productivity.



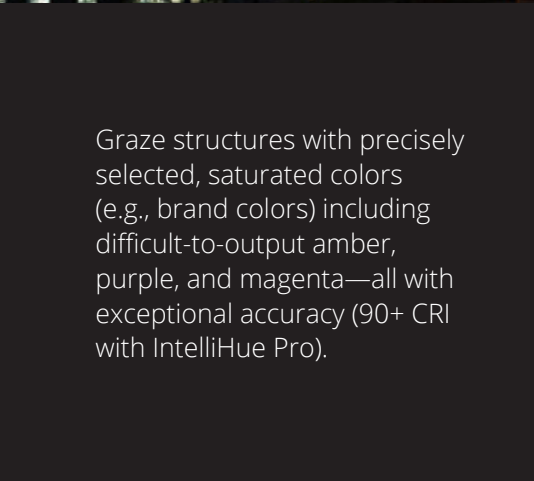
Transform bridges and other structures with brilliant dynamic color at night, with the option to switch to brilliant white light in seconds.



Create outdoor spaces that benefit from bright white light for safety and color light to create a specific mood or for special events/holidays.



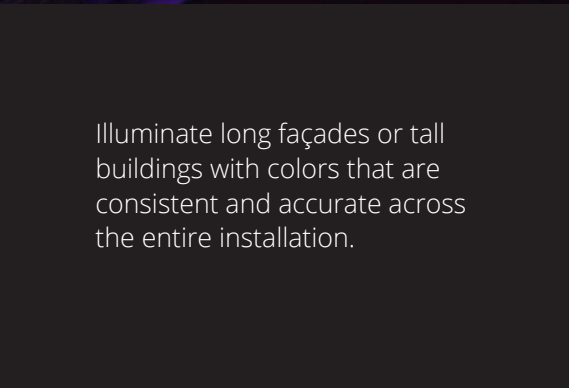
Enable art galleries and other creative businesses to create compelling, colorful spaces—all while showing art, retail displays, and other objects at their best with precisely tuned white light.



Graze structures with precisely selected, saturated colors (e.g., brand colors) including difficult-to-output amber, purple, and magenta—all with exceptional accuracy (90+ CRI with IntelliHue Pro).



Provide wayfinding illumination in large facilities, where white and color light are required at different times or in different areas.



Illuminate long façades or tall buildings with colors that are consistent and accurate across the entire installation.



Explore the Color Kinetics technology portfolio

Our extensive technology portfolio brings you new capabilities and powerful benefits.



Optibin

Where consistency begins.

Our LED optimization technology begins the color consistency process by grouping (or binning) LEDs by flux as well as center wavelength.



Chromasync Pro

Optimize color consistency and saturation.

Our advanced output optimization technology takes a major leap forward in color consistency, accuracy, and simplicity.



IntelliHue

The smart way to deliver white & color light.

Our advanced approach to color mixing produces high-quality white light, subtle pastels, and fully saturated colors in the same precision-controlled luminaire.



OptiField

Uniformity never looked this good.

OptiField's freeform optic creates a breakthrough rectangular beam that covers large surfaces with full, bright, even light—covering more area with fewer luminaires.



Powercore

Power made simple.

Our power-control technology combines line voltage and control data in a single standard cable—simplifying installation and lowering total system cost.



FluxBoost

Unlock the full power of your luminaires.

With FluxBoost, your projects can use more of their allocated power budget, boosting output and efficiency while reducing waste.

What matters in professional lighting?

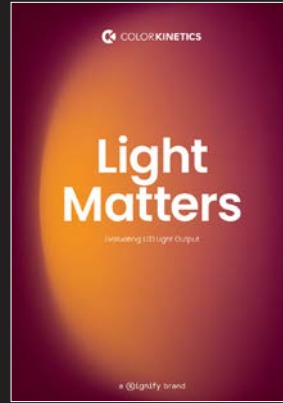
Our series of guides explores key topics in professional lighting—color science, light, quality, optics, and more.

It's part of our commitment to passing on our deep technical knowledge and decades of expertise to help you achieve your vision.



Color Science

Color science serves as an underlying technical foundation for the entire lighting industry. It establishes a consistent way of thinking about light—how it is created, controlled, and delivered in real-world implementations. A core understanding of the science of color is critical to lighting professionals, who must be able to specify the right light—color, technology, luminaire, and more—clearly and accurately.



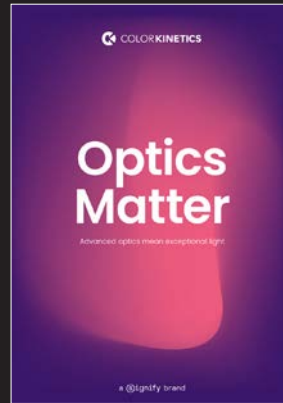
Light Matters

Traditional methods of evaluating light focused on lumen output, which was defined by the output capabilities of a light source, such as an incandescent lamp. The advent of LED lighting changed all that, since lumens were no longer the best measurement of a luminaire's capabilities. We explore some of the new ways lighting can be evaluated in the age of LEDs.



Quality Matters

What does quality mean to you? The answer depends on what you do within the lighting industry. Quality has different meanings for building and site owners/managers, lighting designers, and installers. We delve into the needs of each of these groups as we take a holistic approach to quality, one that begins and ends with the customer.



Optics Matter

It's safe to say that few lighting designers, building owners/managers, or other lighting professionals have ever seen the optical system housed inside an LED luminaire. But the optical system, or optics, play a vital, but often hidden role in performance, efficiency, and more. The right optics within a luminaire make a big difference in the final results—for both interior and exterior applications.



Control Matters

Controlling light used to be simple. It was on or off. Then came dimming, which raised or lowered the intensity of light. The invention of LED luminaires added another dimension, color—and new capabilities, such as the digitalization of lighting, including the ability to zone dimming and control the spectral content of color-changing light.



Sustainability Matters

By raising efficiency to new heights, our solutions help our customers do more with less energy. And since we design our solutions for long, useful lives, they create less waste. So, our customers get great results, year after year. All with less impact on the planet.

Choose the luminaire that meets your needs

IntelliHue technology is just part of the ongoing effort by Color Kinetics to set new standards for light quality. Our technologies work together to deliver the precise accuracy and high output that meet the needs of even the most ambitious white light and dynamic color applications. The IntelliHue family of advanced LED luminaires includes form factors that match the requirements of wide-ranging applications. And we continue to

add new luminaires—and new capabilities—to meet the evolving needs of our customers.

To find out more about how to make IntelliHue luminaires part of your next lighting design, visit www.colorkinetics.com/IntelliHue

Note: IntelliHue Pro is available for specific Color Kinetics luminaire families, while other luminaires may use our core IntelliHue technology, proven effective in thousands of installations. To find out the current availability status of IntelliHue Pro, go to colorkinetics.helpdocs.io/article/a2gad7c1ej



Photography: [thisisengineering](#)

© 2025 Signify Holding. All rights reserved. The information provided herein is subject to change, without notice. Signify does not give any representation or warranty as to the accuracy or completeness of the information included herein and shall not be liable for any action in reliance thereon. The information presented in this document is not intended as any commercial offer and does not form part of any quotation or contract, unless otherwise agreed by Signify.

All trademarks are owned by Signify Holding or their respective owners.



www.colorkinetics.com